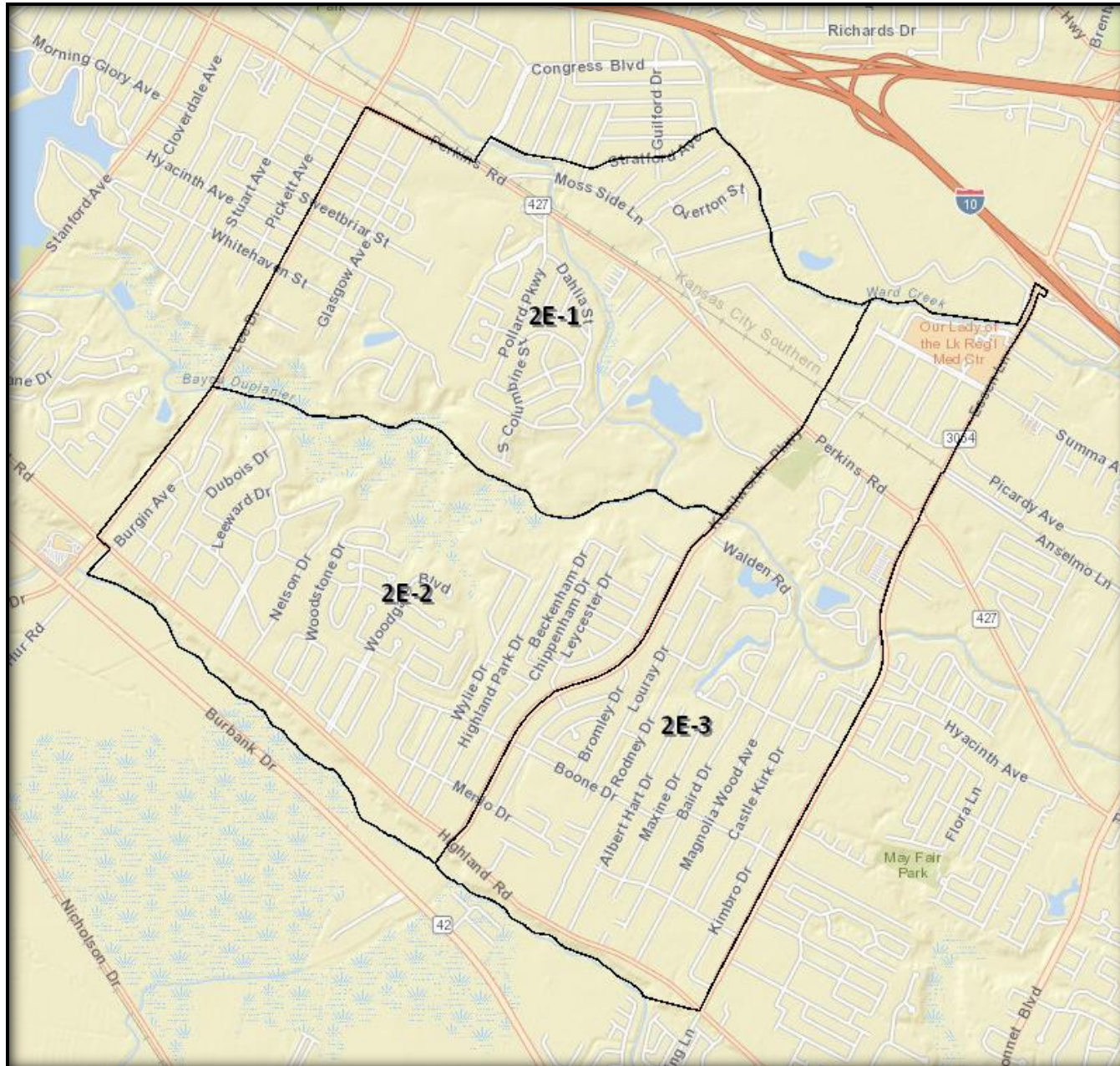


Multi-Neighborhood Crime Prevention and Safety Meeting



CAD by Zip Code for 2016

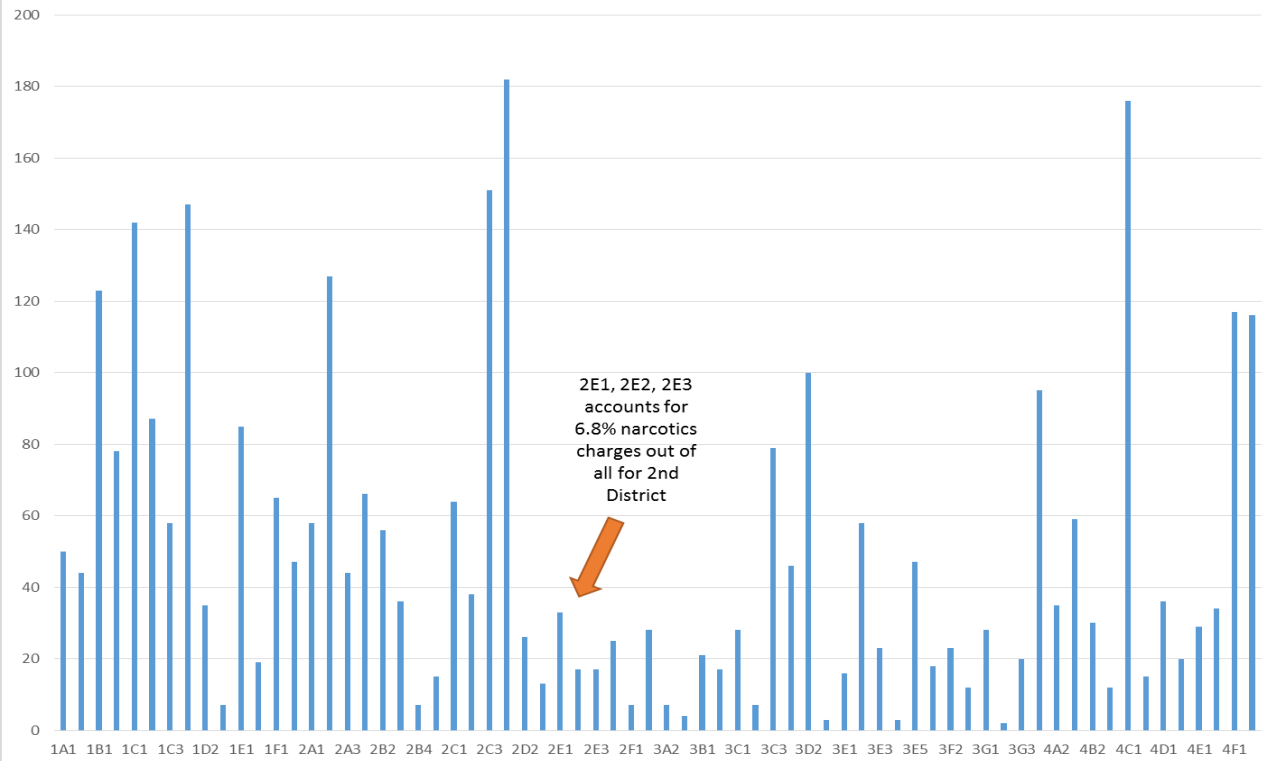
Call Description	70801	70802	70803	70804	70805	70806	70807	70808	70809	70810	70811	70812	70814	70815	70816	70819	70820	70821	70836
911 Call	1171	8898	1365	668	8726	8728	3304	4216	1544	877	926	2045	1271	4605	2724	193	1159	587	378
Alarm	1087	4992	961	837	4646	7167	1406	5442	2156	724	659	1179	1714	5265	3153	238	798	590	236
Alert	0	0	0	0	0	0	10	0	0	0	0	0	0	0	0	0	0	0	0
Assault/Battery	166	1067	93	77	1074	1012	396	420	76	57	135	201	68	383	286	10	175	82	18
Boat accident/Drowning	0	0	0	0	2	0	1	1	1	0	0	2	2	1	1	0	0	0	0
Bolo	277	1119	328	130	1001	1202	618	1260	845	95	156	249	242	1083	1213	60	341	105	19
Bomb threat	2	3	0	0	1	0	0	0	0	0	0	0	1	2	3	0	0	2	0
Burglary	81	705	139	59	847	728	200	441	56	33	70	219	147	490	298	39	178	46	4
Chemical Accident	0	1	0	0	0	1	1	1	0	0	0	0	0	0	1	0	1	0	0
Damage to property	142	804	104	45	744	725	313	409	101	32	109	149	76	401	277	16	152	70	15
Deceased person -no sus. Circum.	6	88	11	12	67	93	33	35	15	8	12	13	10	47	25	0	6	3	0
Disturbance	1225	6764	902	497	6369	6021	2105	2933	771	288	756	1233	576	2861	2180	100	1054	602	78
Drunk or drunk driver	11	32	14	2	12	17	1	26	4	0	0	2	3	14	18	2	11	4	0
Emotionally disturbed person	218	1009	116	139	662	858	146	213	83	34	55	120	49	246	150	9	59	124	12
Fight	66	297	31	9	318	293	124	112	32	18	40	65	16	120	68	2	46	41	12
Foot pursuit	2	9	1	0	9	3	2	1	0	0	1	2	1	2	1	0	1	1	0
Hit and run	289	1120	218	119	718	1131	234	767	396	84	93	174	108	543	490	21	220	101	59
Improper telephone communications	15	65	17	3	54	48	31	26	7	3	17	14	9	28	21	1	10	5	2
Kidnapping	0	5	2	0	0	3	3	1	0	0	0	0	0	0	0	0	1	0	0
Missing person	110	320	13	25	227	237	56	83	21	18	30	49	29	90	79	2	21	81	5
Motor Vehicle Theft	83	527	86	38	436	504	157	272	58	27	84	95	65	272	158	9	97	36	7
Officer needs assistance	1	3	0	0	1	4	0	1	1	0	0	1	0	4	1	0	0	0	0
Payroll escort - reasonable threat	0	1	0	0	1	0	0	0	0	0	0	0	0	0	0	0	0	0	0
Prowler	0	3	1	0	3	9	2	10	2	0	0	0	1	4	1	0	2	0	0
PSO involved in altercation	3	31	8	3	23	29	6	19	5	2	0	0	0	17	5	0	7	2	0
Public assistance	796	3809	458	326	3089	3628	1232	1883	589	275	357	651	457	1942	1321	74	566	346	89
Road Hazard	800	2226	411	152	1226	1950	497	1602	966	155	117	248	183	998	931	53	328	368	60
Robbery	30	202	24	28	170	200	61	126	25	9	22	36	25	77	78	2	68	19	3
Sexual offenses	18	104	6	7	113	87	44	48	12	8	6	13	3	61	31	1	10	11	3
Shooting/Shots fired	100	1770	169	31	1657	1155	466	291	32	26	67	276	62	424	162	20	80	47	2
Stabbing	7	46	5	3	55	39	8	14	0	0	9	9	3						
Stalled vehicle	601	1475	250	68	722	1065	361	750	580	61	50	123	13						
Suicide/Overdose	34	193	37	24	144	176	51	148	37	14	14	32	11						
Suspicious incident	778	4041	629	365	3231	3874	1046	2222	567	190	306	704	34						
Theft/Shoplifting	425	1940	304	262	1489	1670	381	1056	478	261	189	252	15						
Traffic accident	1486	4747	1197	625	2620	4904	1205	4148	2398	508	323	709	46						
Vehicle Burglary	185	699	182	96	442	687	213	600	120	32	71	116	83						
Vehicle pursuit	2	15	4	2	18	11	5	3	3	0	3	1	2						
Vice Offenses	123	1117	325	45	730	772	369	817	72	18	52	79	23						
Vicious animal attacking people	5	36	5	0	29	26	17	20	2	3	6	8	6						
Violation	365	3210	619	366	2127	3434	736	1516	611	40	112	240	152	1025	521	25	400	104	4
Grand Total	10710	53493	9035	5063	43803	52491	15841	31933	12666	3900	4847	9309	6494	28387	20176	1136	9053	4907	1597

***70808 accounts for 9.8% of calls in this table. 2E1, 2E2, 2E3 accounts for 7,798 out of 31,933 calls (24.4% of 70808 calls are this area)

BRPD Narcotics Charges by Zone: 1/1/16 - 12/31/16

Zone Area	DIST/MANF SCH 2 DRUG	DIST/MANF SCH 3 DRUG	DIST/MANF SCH 4 DRUG	DIST/MANF SCH 5 DRUG	DIST/MANF SCH1 DRUG	DRUG PARA PROH	MINGLING HARMFUL SUBSTANCES	MINORS/USE CDS IN PRESENCE	NARC/USE/POS/DIST RUSH	POSS HYPO SYRINGE	POSS HYPO SYRINGE/CC	POSS MARIJUANA	POSS MARIJUANA/CC	POSS OF DRUG PARAPHERNALIA	POSS OF FIREARM W/ DRUGS	POSS OF SCHEDULE 2 DRUGS	POSS SCH 1 DRUGS	POSS SCH 2 DRUGS	POSS SCH 3 DRUGS	POSS SCH 4 DRUGS	POSS SCH 5 DRUGS	POSS/DEAL FIREARM OBLITERATED#	POSS/DIST MANF CULT SCHED I	POSS/DIST MANF SCH III	POSS/DIST MANF SCH IV	POSS/DIST MANF SCH V	POSS/DIST MANUF SCHED II	POSS/MANF/DIST COUNTERFEIT DRG	POSSESSION DRUG PARAPHERNELIA	VIOL CDS LAW NEAR SCHOOL	Grand Total	
2E1	1	1			3	1							17			2	2						3							3		33
2E2					2							1	4		1	2	4				1			2								17
2E3					1								6			4				1		3		1			1				17	

Narcotics Charges by Zone Area in 2016

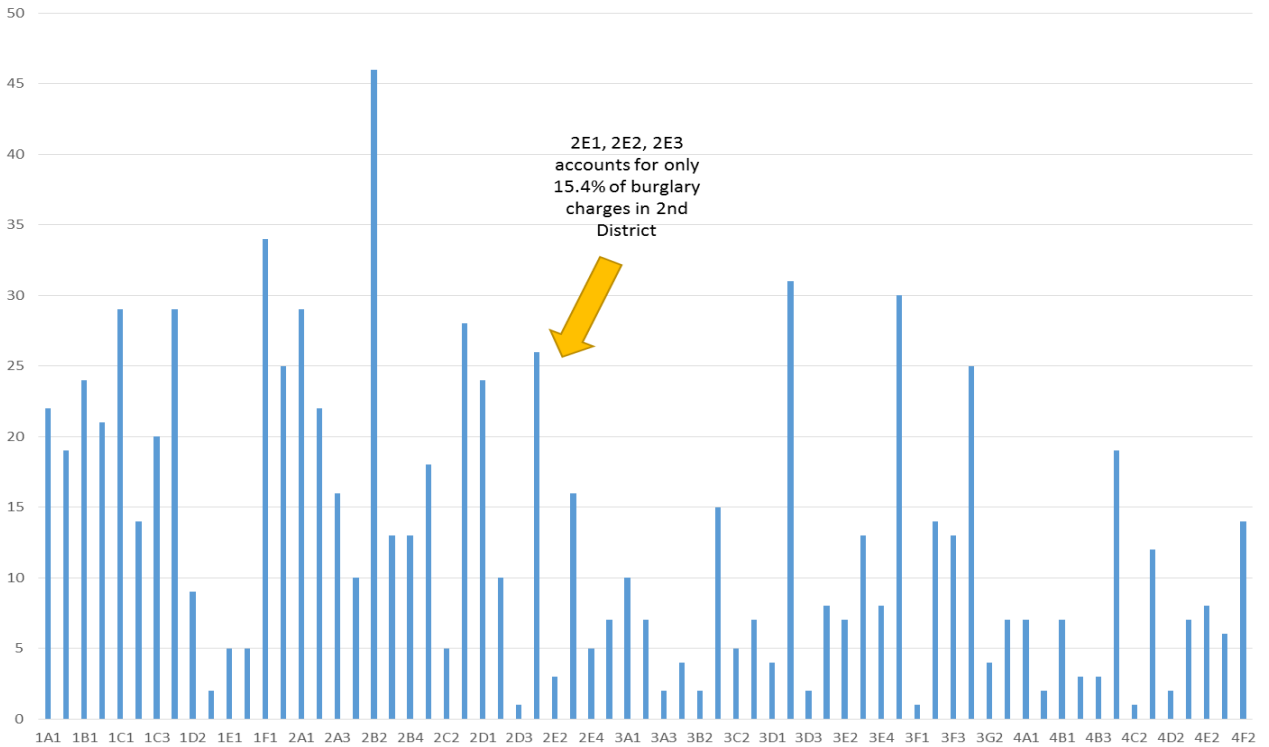


6.8% narcotics charges (not necessarily arrests) in 2E1, 2E2, 2E3 when comparing the whole district (67 for that area out of 982 for District 2)

BRPD Burglary Charges by Zone: 1/1/16 - 12/31/16

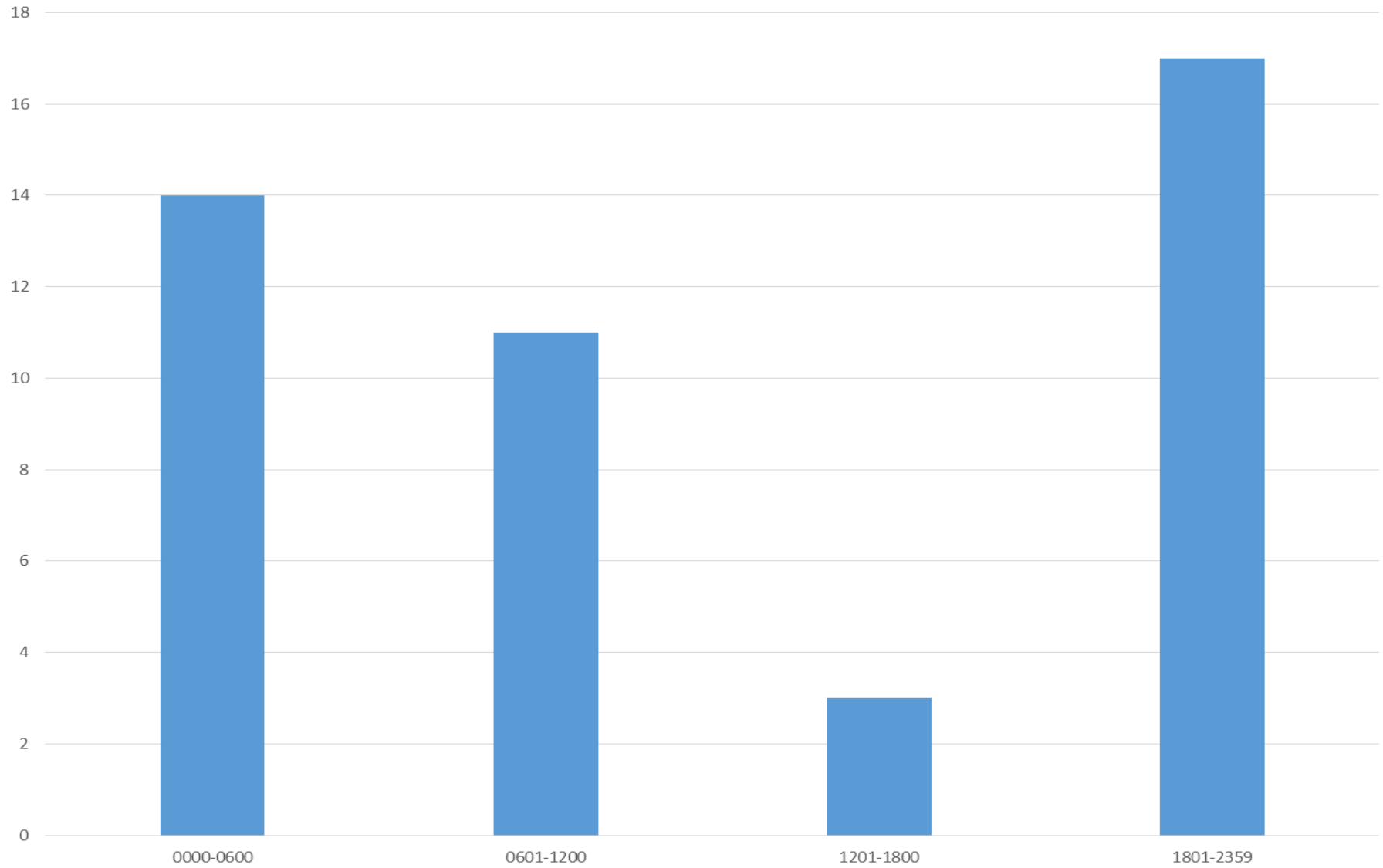
Zone Area	BURG/AG NON RES NIGHT NO FORCE	BURG/AGG NON RES DAY FORCE	BURG/AGG NON RES NIGHT FORCE	BURG/AGG NON RES UNK FORCE	BURG/AGG NON RES UNK NO FORCE	BURG/AGG RES DAY FORCE	BURG/AGG RES DAY NO FORCE	BURG/AGG RES NIGHT FORCE	BURG/AGG RES NIGHT NO FORCE	BURG/AGG RES UNK FORCE	BURG/AUTO \$50 - \$200	BURG/AUTO OVER \$200	BURG/AUTO UNDER \$50	BURG/S NON RES DAY FORCE	BURG/S NON RES DAY NO FORCE	BURG/S NON RES NIGHT FORCE	BURG/S NON RES NIGHT NO FORCE	BURG/S NON RES UNK FORCE	BURG/S NON RES UNK NO FORCE	BURG/S RES DAY FORCE	BURG/S RES DAY NO FORCE	BURG/S RES NIGHT FORCE	BURG/S RES UNK FORCE	BURG/S RES UNK NO FORCE	LOOTING	THEFT \$50-\$200 FROM AUTO	THEFT OVER \$200 FROM AUTO	THEFT UNDER \$50 FROM AUTO	UNAU ENTRY BUSINESS	UNAU ENTRY INHAB DWELLING	Grand Total
2E1				1				1			13	5	2							1							1			2	26
2E2												2	1																	9	
2E3					1		1						9	3															2	16	

Burglary Incidents by Zone in 2016



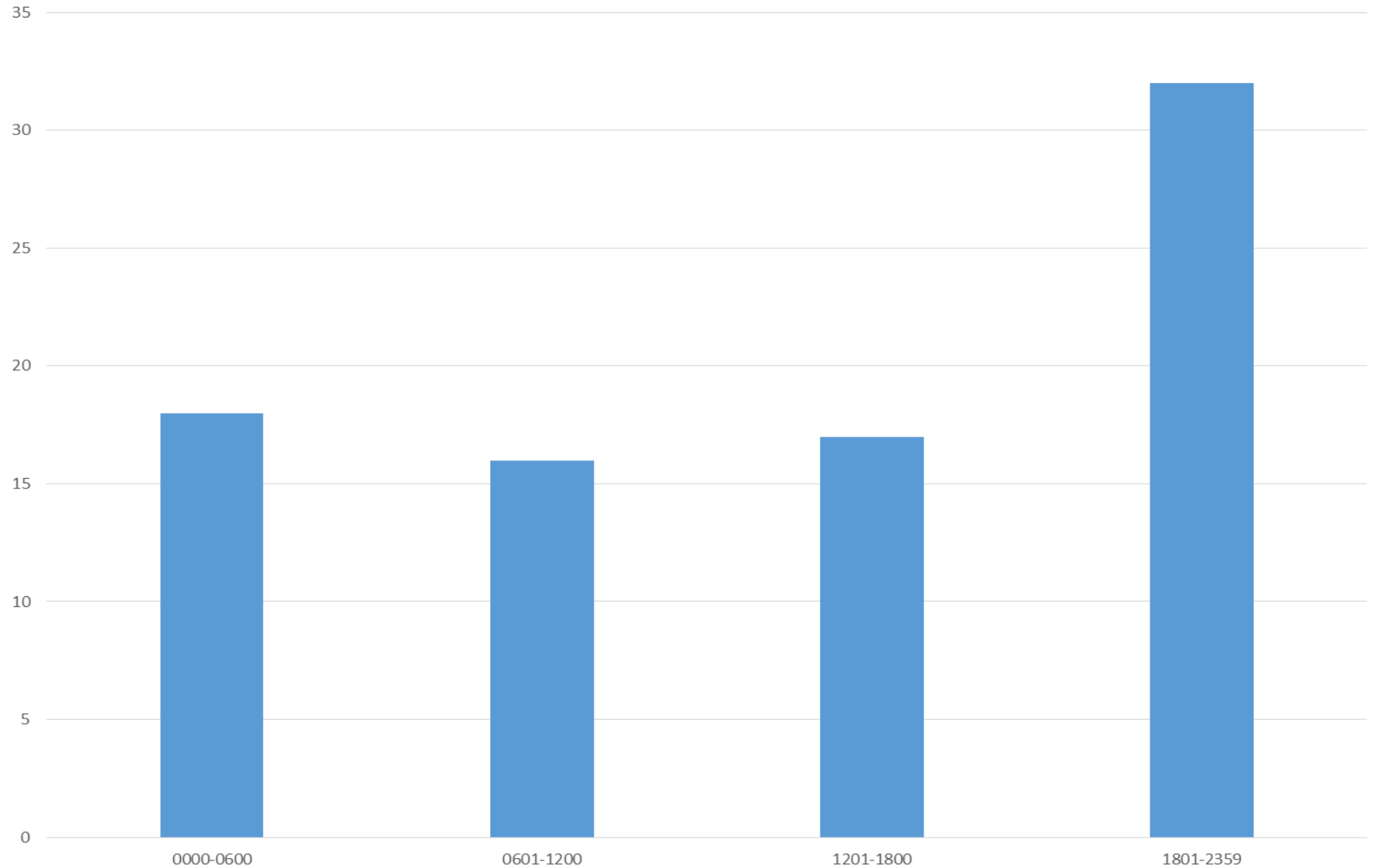
15.4% burglary charges in 2E1, 2E2, 2E3 out of 2nd District (45 for that area out of 292 for District 2)

Time of Burglary Incidents for 2E1, 2E2, 2E3 in 2016



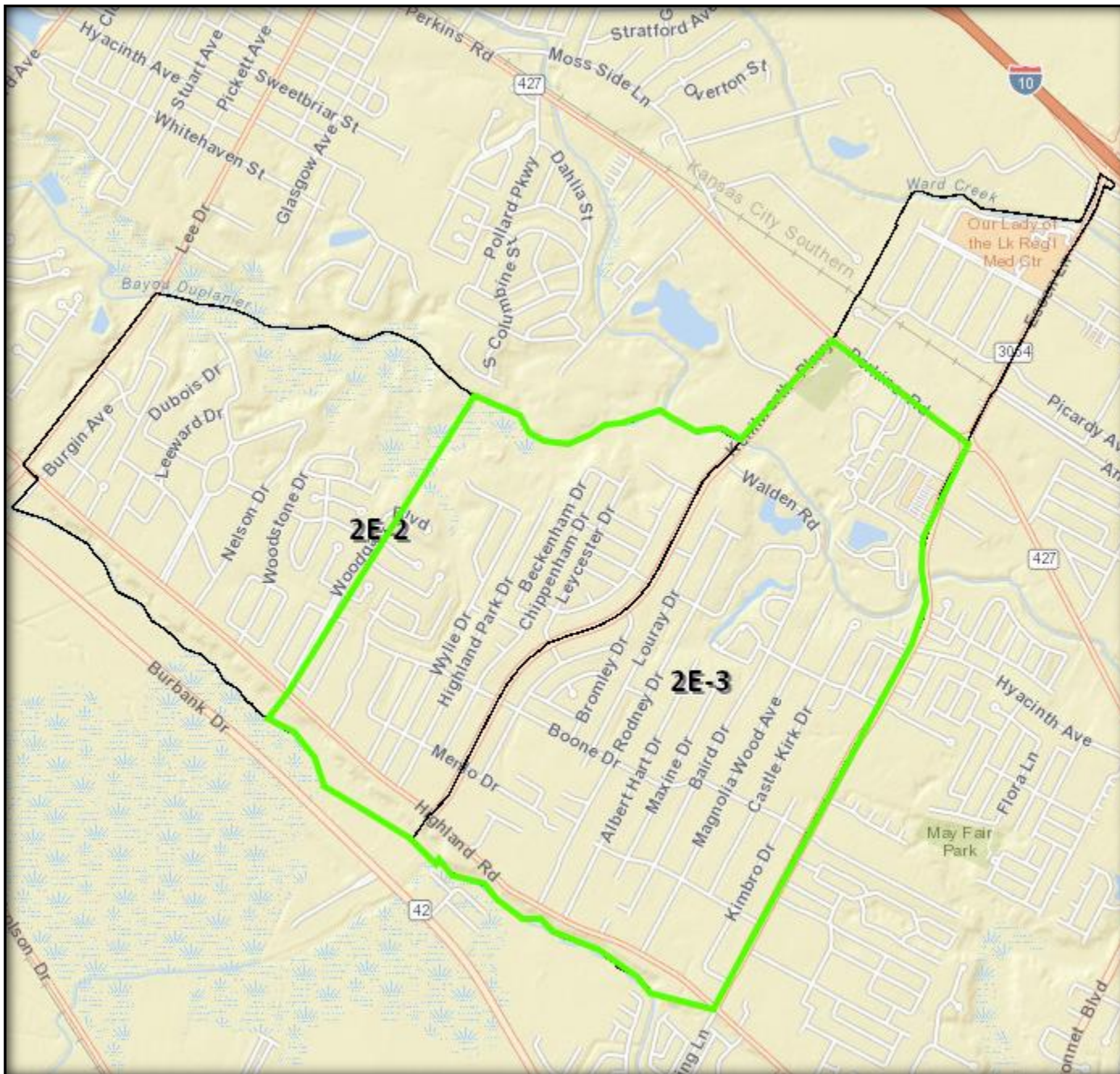
Times for all burglary incidents in 2E1, 2E2, 2E3 – highest volume during 1801-2359, only slightly higher than 0000 - 0600

Vehicle Burglary Incidents for 2E1, 2E2, 2E3 in 2016

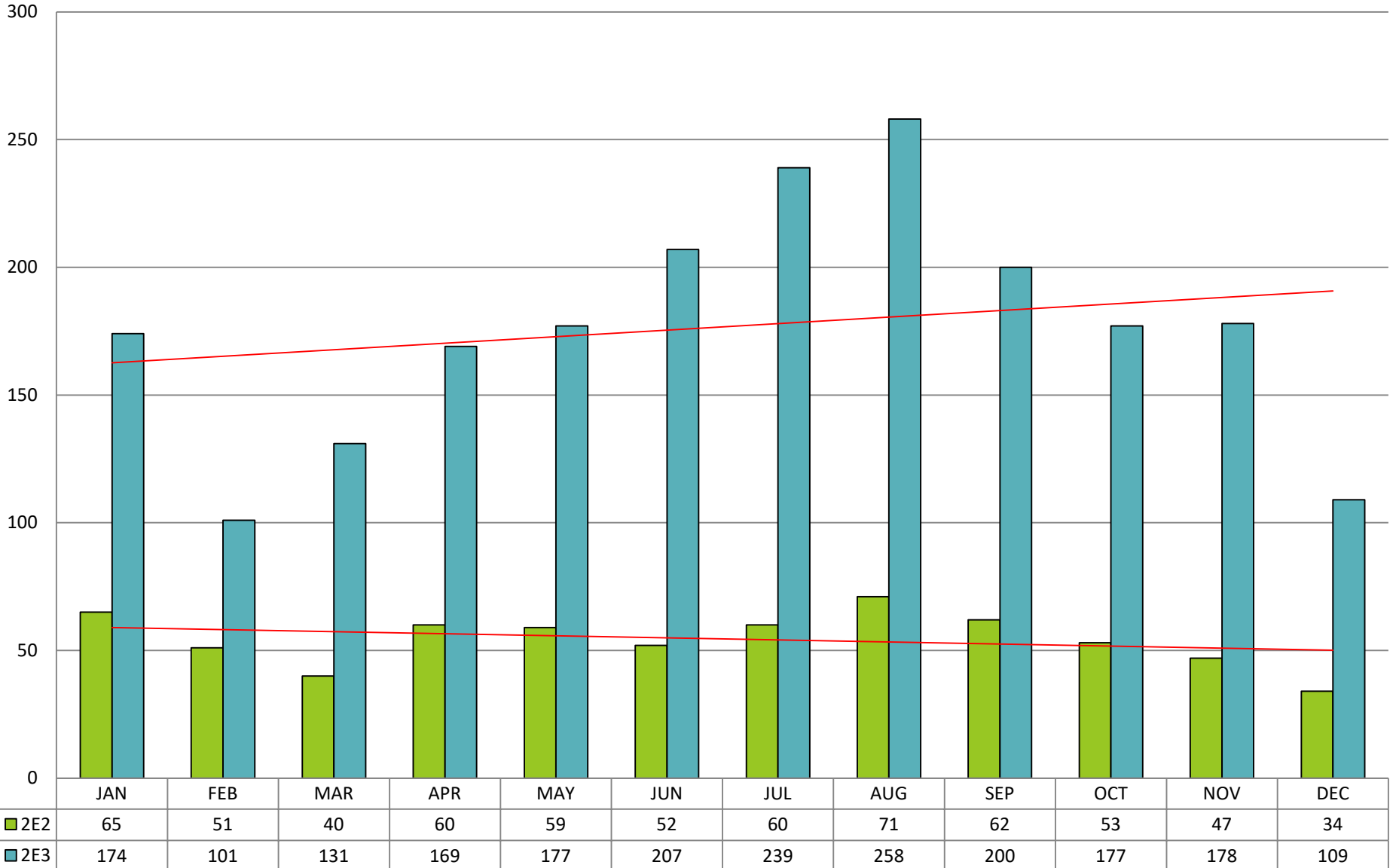


Times for Vehicle Burglaries – Highest volume during 1801 - 2359

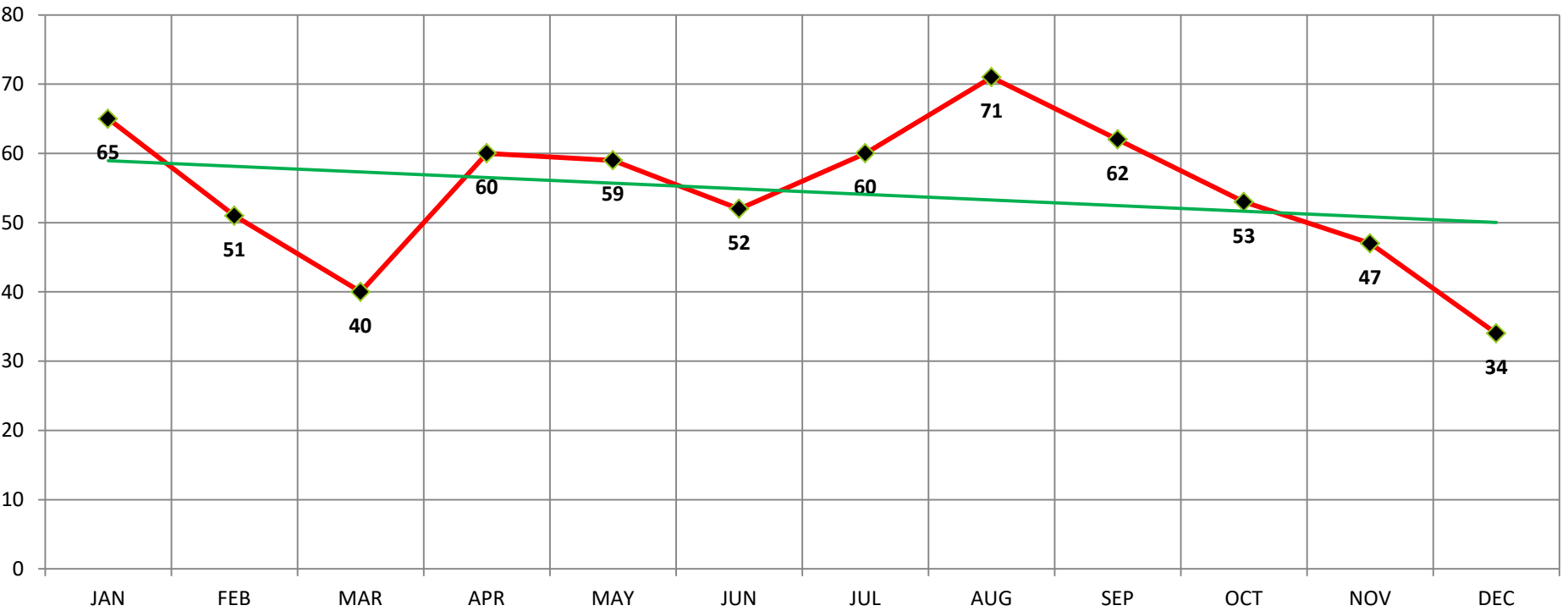
2E-2/2E-3 NEIGHBORHOOD BREAKDOWN



MONTHLY TREND: 2E-2/2E-3

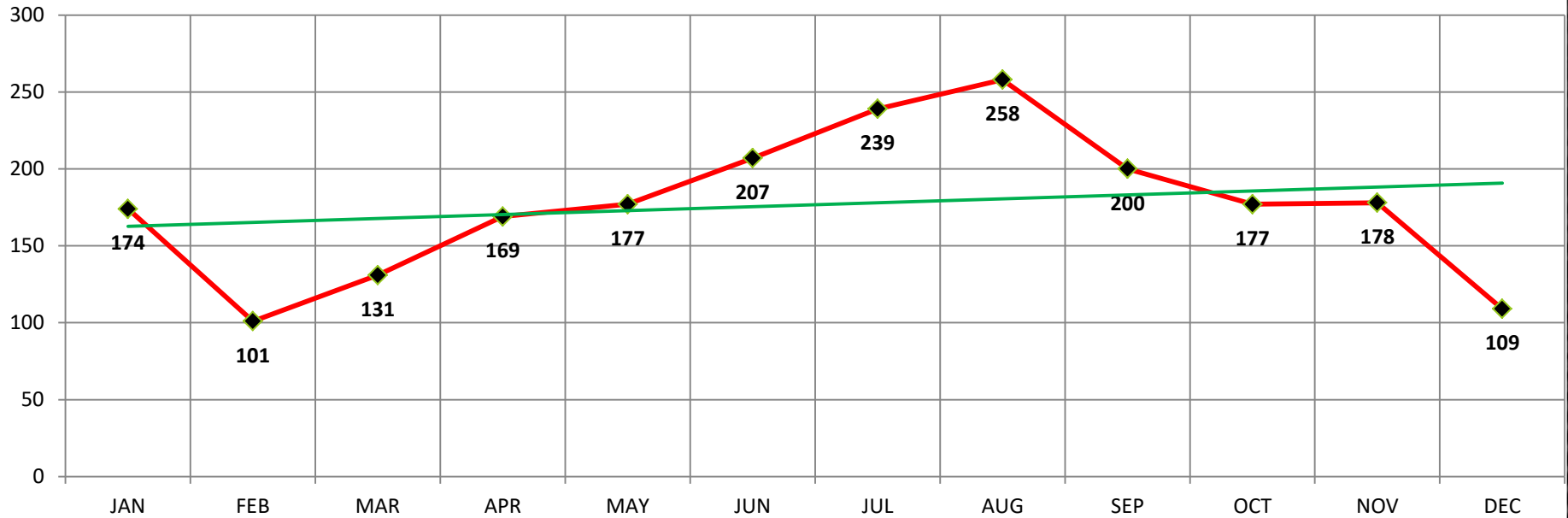


MONTHLY TREND: 2E-2



OFFENSE DESCRIPTION	JAN	FEB	MAR	APR	MAY	JUN	JUL	AUG	SEP	OCT	NOV	DEC	Grand Total
ALARM	30	19	14	21	26	25	29	37	23	11	15	12	262
E911 HANG UP	11	13	8	10	12	8	11	13	13	14	9	4	126
PUBLIC ASSISTANCE	4	5	8	4	1	2	7	5	5	11	4	7	63
SUS INC/PERSON/VEH	2	3	4	4	6	2	3	2	5	1	3	1	36
DISTURBANCE	5	4		1	2	5	2	1	6	4	2	1	33
SUS INC/PER/VEH	2	2	1	7	3	3		2	3	3	3	3	32
BE ON LOOK OUT	2	2		2	2	1	2	1	2	2	2	1	19
BURGLARY	1			3		1	1	1	1		2	2	12
DAM TO PROP/VANDALISM	1	1					1	4	1	3	1		12
EDP	2		1	1	3		2		1		1	1	12
THEFT	1			1	3	1		1	1	1	2	1	12
ABANDONED/STALLED VEH			2	3				4		1			10

MONTHLY TREND: 2E-3



OFFENSE DESCRIPTION	JAN	FEB	MAR	APR	MAY	JUN	JUL	AUG	SEP	OCT	NOV	DEC	Grand Total
ALARM	74	48	46	52	77	93	106	117	61	65	43	43	825
E911 HANG UP	36	25	27	38	34	32	60	67	50	43	45	16	473
DISTURBANCE	27	18	25	27	28	26	34	25	32	29	30	14	315
PUBLIC ASSISTANCE	19	16	16	16	15	16	22	27	23	22	14	12	218
SUS INC/PERSON/VEH	13	12	8	15	18	18	12	12	12	9	9	15	153
SUS INC/PER/VEH	7	8	4	13	13	16	6	13	18	15	12	8	133
BE ON LOOK OUT	10	5	8	14	6	5	14	10	11	7	8	4	102
THEFT	10	5	6	6	10	5	11	7	11	8	16	4	99
DAM TO PROP/VANDALISM	6	3	1	5	4	4	4	7	4	5	7	4	54
ASSAULT/BATTERY	6	1	5	8	4	3	3		8	4	3	3	48
BURGLARY	4	2	3	7	1	7	1	7	6	2	4	3	47
ABANDONED/STALLED VEH	2	1	5	3	1	1	3	13	2	3	2	3	39
VEH BURGLARY	9	1	4	2	4	4	1	5	4	2	3		39
SHOOTING/SHOTS FIRED	1	2	1	3	2	7	8	1	3	3	3	4	38
HIT & RUN	2	1	2	1	2	2	6	2	1	3	5	2	29
EDP	4	1	1	2	3		4	2	3	1	3	1	25
HIT & RUN - PARKING LOT	1		2	4	2	3		2	3	1	3	1	22
MISSING PERSON	1		1	4	1	3	1	4	1	1	1		18
VICE OFFENSE	1		3	1		3		2	2	1	1	3	17
FIGHT				1	2	4			2	1	3	2	15
AUTO THEFT	1			1	1	2	1	3	1	1	2		13
SUICIDE/ATT SUICIDE/O.D.	1	1	1	4		2					3	1	13

